
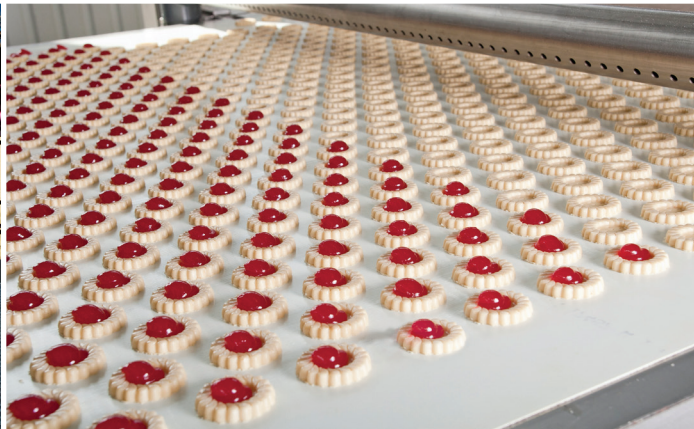
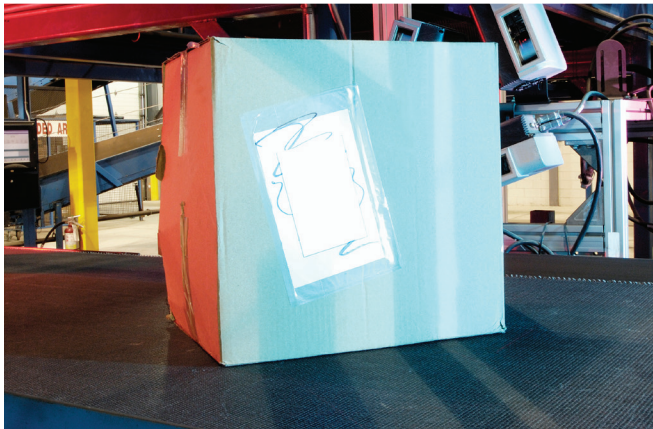
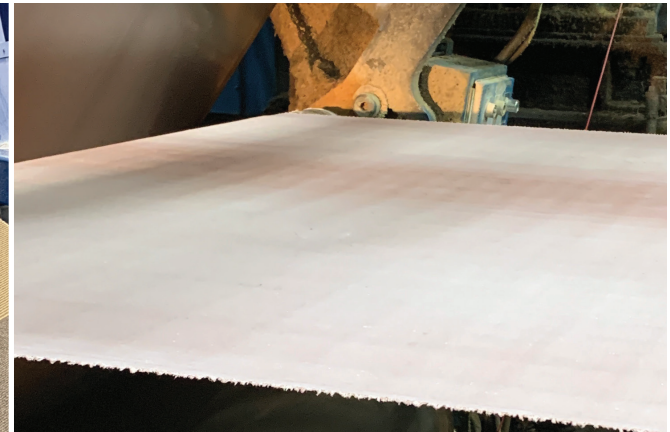
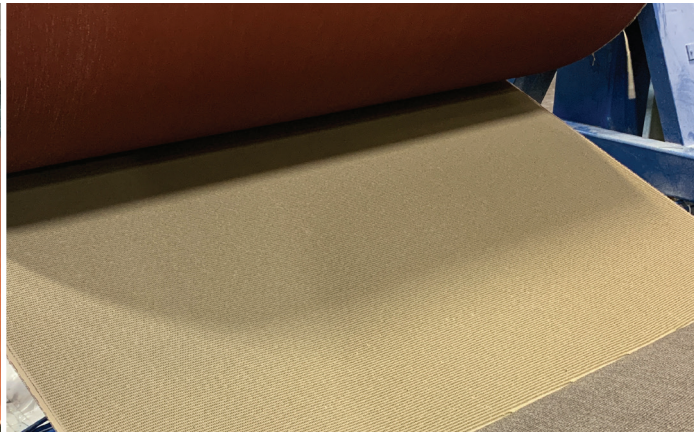
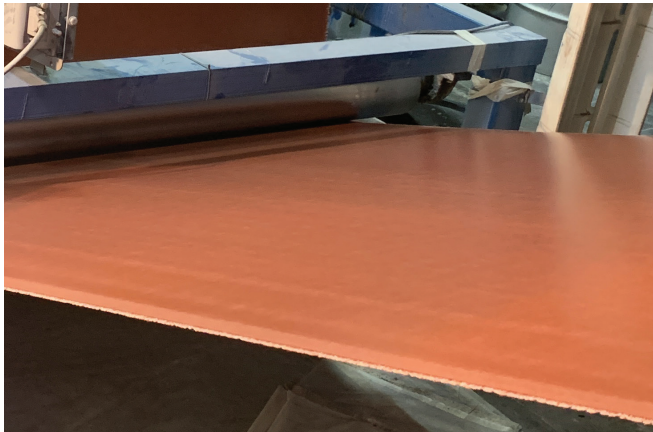


Thermoid®

Made in U.S.A. 



LIGHTWEIGHT CONVEYOR STOCK BELTING

www.thermoid.com

INDEX

USDA AND FDA WHITE FOOD HANDLING

TEFLON* - WHITE NITRILE	4
HOT 'N COLD - WHITE BUTYL	4
RIDGETOP™ - WHITE NITRILE	5
SANI-BRIGHT™	5
SANI-WHITE™	6

INCLINE/IMPRESSION

DIAMOND INCLINE - TAN RUBBER	7
DIAMOND INCLINE - BLACK RUBBER	7
GRIPTOP™ - ORANGE CARBOXYLATED NITRILE	8
GRIPTOP™ - BLUE CARBOXYLATED NITRILE	8
GRIPTOP™ - RED/BROWN NITRILE	9
GRIPTOP™ - AMBER PURE GUM	9
GRIPTOP™ - TAN RUBBER	10
GRIPTOP™ - BLACK RUBBER	10
V-CLEAT - BLACK RUBBER	11

GENERAL INDUSTRIAL

NITRILE BLACK	12
SHEETING - RED/BROWN NITRILE	12

PACKAGE HANDLING

BLACK MONOFILAMENT	13
SLIDE-A-PACK™ - TAN RUBBER	14
SLIPTOP™ - TAN NITRILE	14
CARIPACK™ - BLACK RUBBER	15

HOT STOCK & WATER

HOT STOCK & WATER	16
HOT STOCK & WATER BIG RED SILICONE	16

PRODUCT ITEM DESCRIPTION KEY 17

*Teflon is a registered mark of Chemours Company.



Thermoid has represented excellence in quality since 1883, and has delivered innovative solutions for the most challenging environments.



Thermoid has a strong legacy of supplying high-quality, reliable rubber products to the industrial marketplace. Thermoid's internal mixing process provides conveyor belts with a consistent quality. From standard to custom-designed, we can create a variety of lightweight conveyor belting to meet demanding and unique applications.



Thermoid products are made in environmentally safe manufacturing facilities. All products are designed to meet or exceed stringent industry standards. Our commitment to maintaining and improving the quality and performance of our products has made us a preferred partner to our customers.

USDA AND FDA WHITE FOOD HANDLING

TEFLON* - WHITE NITRILE

Product Code	Item Description*	Rated Working Tension
24023023542	54"x3P AP105 WHT NBR TEFxFS (S10) (1,2)	105 lbs/in



APPLICATIONS

- Bakery and candy

BENEFITS

- Excellent release properties
- Easy washdown

** Teflon is a registered mark of Chemours Company.*

HOT 'N COLD - WHITE BUTYL

Product Code	Item Description*	Rated Working Tension
24243721722	72"x3P APT105 WHT BUTYL 1/32xFS (S10) (1,2) HOT/COLD	105 lbs/in



APPLICATIONS

- Hot Food
- Dairies or bakeries (temperature conditions)
- Meats, poultry and bakery
- Fruit and vegetable processing
- Frozen foods (sub-zero temperatures)

BENEFITS

- Butyl compound is designed for temperatures from -65°F to +300°F
- Polyester fabric is low stretch and moisture resistant

RIDGETOP™ - WHITE NITRILE

Product Code	Item Description*	Rated Working Tension
24283829722	72"x3P PNT150 WHT NBR RD/TPxFS (S10) (1,2) SANI-BRIGHT	150 lbs/in



APPLICATIONS

- Meats, poultry and bakery
- Fruit and vegetable processing
- Agriculture incline service

BENEFITS

- Molded cleat 1/8" on 1" centers
- Carries meat and food products up 20-30° inclines
- Offers good resistance to oil, grease, fats, food acids

SANI-BRIGHT™

Product Code	Item Description*	Rated Working Tension
24903731722	72"x3P APT105 WHT NBR 1/32xFS (S15) (1,2) SANI-BRIGHT	105 lbs/in
24913021722	72"x3P PNT150 WHT NBR 0.04xFS (S10) (1,2) SANI-BRIGHT	150 lbs/in



APPLICATIONS

- Meats, poultry and bakery
- Hot, oily foods
- Fruit and vegetable processing

BENEFITS

- Exceptional resistance to oil, grease, fats, food acids and moisture
- Smooth cover resists abrasion and makes for easier cleaning
- Low stretch and good fastener retention

Representative image

SANI-WHITE™

Product Code	Item Description*	Rated Working Tension
24092821722	72"x2P APT70 WHT NBR 3/64xFS (S10) (1,2) SANI-WHITE	70 lbs/in
24093755722	72"x3P APT105 WHT NBR 1/32x1/32 (S30) (1,2) SANI-WHITE	105 lbs/in
24282821722	72"x2P PNT100 WHT NBR 3/64xFS (S10) (1,2) SANI-WHITE	100 lbs/in



Representative image

APPLICATIONS

- Meats, poultry and bakery
- Hot, oily foods
- Fruit and vegetable processing

BENEFITS

- Matte finish to help reduce eye strain on inspection lines
- Exceptional resistance to oil, grease, fats, food acids and moisture
- Smooth cover resists abrasion and makes for easier cleaning
- Polyester fabric is low stretch and moisture resistant

INCLINE/IMPRESSION

DIAMOND INCLINE - TAN RUBBER

Product Code	Item Description*	Rated Working Tension
24722079722	72"x2P APT150 TAN SYN DIAxTD (S50)	150 lbs/in



APPLICATIONS

- Ideal for package handling on steep incline/decline angles up to 45°

BENEFITS

- Polyester fabric has low stretch and offers excellent fastener retention
- Cover compound is non-marking natural rubber
- Softer rubber cover provides excellent grip without the need for siping

DIAMOND INCLINE - BLACK RUBBER

Product Code	Item Description*	Rated Working Tension
24892079722	72"x2P APT150 BLK SYN DIAxTD (S50)	150 lbs/in



APPLICATIONS

- Ideal for package handling on steep incline/decline angles up to 45°

BENEFITS

- Polyester fabric has low stretch and offers excellent fastener retention
- Treated duck bottom has low coefficient of friction for slider bed applications
- Softer rubber cover provides excellent grip without the need for siping

INCLINE/IMPRESSION ...continued

GRIPTOP™ - ORANGE CARBOXYLATED NITRILE

Product Code	Item Description*	Rated Working Tension
24123436722	72"x3P PNT150 ORG xNBR RTxTD (S15)	150 lbs/in



APPLICATIONS

- General incline/decline conveying
- Where abrasion resistance is needed
- Paper and cardboard production and converting
- Wood processing

BENEFITS

- Configuration good for incline service
- Carboxylated nitrile offers excellent abrasion, chemical and oil resistance
- Rough top textured surface grips material on incline use

GRIPTOP™ - BLUE CARBOXYLATED NITRILE

Product Code	Item Description*	Rated Working Tension
24123441722	72"x3P PNT150 BLU xNBR RTxTD (S20)	150 lbs/in
24920127722	72"x3P APT225 BLU xNBR RTxTD (S30) (4)	225 lbs/in



APPLICATIONS

- General incline/decline conveying
- Where abrasion resistance is needed
- Paper and cardboard production and converting

BENEFITS

- Configuration good for incline service
- Carboxylated nitrile offers excellent abrasion, chemical and oil resistance
- Rough top textured surface grips material on incline use

Representative image

INCLINE/IMPRESSION *...continued*

GRIPTOP™ - RED/BROWN NITRILE

Product Code	Item Description*	Rated Working Tension
24213421722	72"x3P PN150 R/B NBR RTxFS (S10)	150 lbs/in



APPLICATIONS

- Ideal for package handling on steep incline/decline angles up to 35°
- Light industrial & automation belts when oil is present

BENEFITS

- Excellent oil resistance in applications where oil might be present
- Rough top textured surface grips material on incline/decline

GRIPTOP™ - AMBER PURE GUM

Product Code	Item Description*	Rated Working Tension
24533404722	72"x3P PCB105 AMB PG RTxFS (S0)	105 lbs/in



APPLICATIONS

- Ideal for package handling on steep incline/decline angles up to 35°

BENEFITS

- Softest cover of Griptop belts and offers most grab
- Non-marking show very good abrasion properties
- Resistant to tearing or gouging

INCLINE/IMPRESSION *...continued*

GRIPTOP™ - TAN RUBBER

Product Code	Item Description*	Rated Working Tension
24692452722	72"x2P APT150 TAN SYN RTxTD (S30)	150 lbs/in
24543404722	72"x3P PCB105 TAN SYN RTxFS (S8)	105 lbs/in



Representative image

APPLICATIONS

- General incline/decline conveying
- Agriculture incline service
- Light industrial and automation belts when oil is present

BENEFITS

- Rough top textured surface with raised rubber peaks grips each package and carries up inclines
- Offers excellent fastener ability
- Tan surface is non-marking

GRIPTOP™ - BLACK RUBBER

Product Code	Item Description*	Rated Working Tension
24920125722	72"x2P PNT150 BLK SYN RTxTD (S20)	150 lbs/in
24920139722	72"x3P PCB105 BLK SYN RTxFS (S0)	105 lbs/in



Representative image

APPLICATIONS

- General incline/decline conveying
- Package handling belts for inclines
- Light industrial and automation belts when oil is present

BENEFITS

- Rough top textured surface with raised rubber peaks grips each package and carries up inclines
- Offers excellent fastener ability

INCLINE/IMPRESSION *...continued*

V-CLEAT - BLACK RUBBER

Product Code	Item Description*	Rated Working Tension
24553029722	72"x3P PCB105 BLK SYN V/CLxFS (S10)	105 lbs/in



APPLICATIONS

- Ideal for package handling on steep incline/decline angles up to 45°

BENEFITS

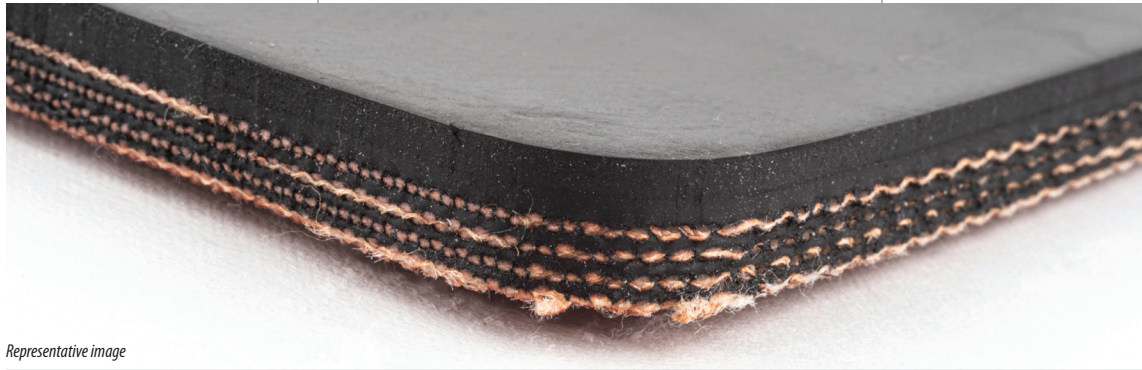
- Superior grab on steepest incline applications
- Fabric provides good fastener retention
- Top cover holds material without damage to articles being conveyed

*See Product Item Description Key on page 17.

GENERAL INDUSTRIAL

NITRILE BLACK

Product Code	Item Description*	Rated Working Tension
24183811722	72"x3P PN150 BLK NBR 3/64xFS (S8) (1)	150 lbs/in
24594034722	72"x4P PNT200 BLK NBR 3/32xTD (S15)	200 lbs/in



Representative image

APPLICATIONS

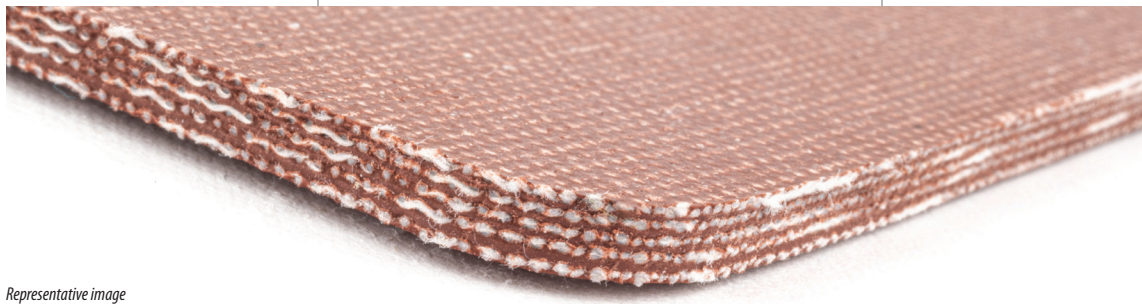
- Good all-around properties for horizontal systems, particularly where oils are present
- 4 ply offers treated duck low coefficient bottom

BENEFITS

- Smooth Nitrile cover finishes offer abrasion and chipping resistance, along with easy clean up
- Polyester fabrics have low stretch, good fastener retention and are moisture resistant
- Nitrile covers offer excellent oil resistance properties

SHEETING - RED/BROWN NITRILE

Product Code	Item Description*	Rated Working Tension
24343111722	72"x3P SCP42 R/B NBR FSxFS (S8)	42 lbs/in
24345111722	72"x5P SCP70 R/B NBR FSxFS (S8)	70 lbs/in
24347111722	72"x7P SCP98 R/B NBR FSxFS (S8)	98 lbs/in



Representative image

APPLICATIONS

- Medium duty sheeting belts for horizontal service to carry cases, cartons and packages
- Oily parts conveying

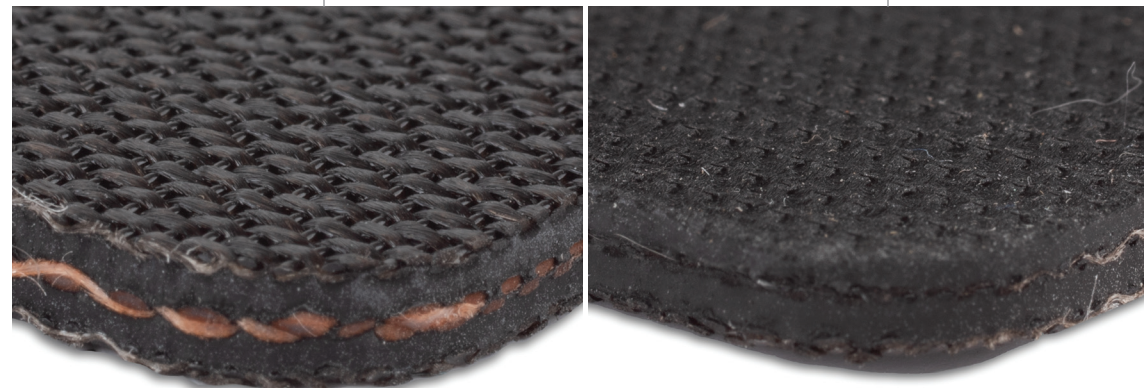
BENEFITS

- Belt has exceptional resistance to oils, grease, fats, food acids and moisture
- Both sides have excellent oil resistance

PACKAGE HANDLING

BLACK MONOFILAMENT

Product Code	Item Description*	Rated Working Tension
BARE		
24303350722	72"X3P MONO135 BLK NAT BBXBB (S30) (3) PACK-EZ	135 lbs/in
24303350602	59.5"X3P MONO135 BLK NAT BBXBB (S30) (3) PACK-EZ	135 lbs/in
24303350482	47.5"X3P MONO135 BLK NAT BBXBB (S30) (3) PACK-EZ	135 lbs/in
24303365722	72"X3P MONO200 BLK NAT BBXBB (S40) (3) PACK-EZ	200 lbs/in
24303365602	59.5"X3P MONO200 BLK NAT BBXBB (S40) (3) PACK-EZ	200 lbs/in
24303365482	47.5"X3P MONO200 BLK NAT BBXBB (S40) (3) PACK-EZ	200 lbs/in
24302375722	72"X2P MONO90 BLK NAT BbxBB (S50) (3) PACK-EZ	90 lbs/in
LIGHT IMPRESSION		
24302465722	72"X2P MONO90 BLK NAT LixBB (S40) (3) PACK-EZ	90 lbs/in



Representative image

APPLICATIONS

BARE

- Warehouse and distribution center package and tote handling

LIGHT IMPRESSION

- Package Handling
- Warehouse and distribution center package and tote handling where an incline, decline, or speed up belt is needed
- Power Turn Belts

BENEFITS

- Special fabric for low coefficient friction
- Great tracking properties for slider bed usages
- Fire Resistant compounds to ASTM D378 Flame Test – 60 seconds max
- Light Impression top cover helps grip the product when needed

SLIDE-A-PACK™ - TAN RUBBER

Product Code	Item Description*	Rated Working Tension
24543111722	72"x3P PCB105 TAN SYN FSxFS (S8) SLIDE-A-PACK	105 lbs/in
24544111722	72"x4P PCB140 TAN SYN FSxFS (S8) SLIDE-A-PACK	140 lbs/in



Representative image

APPLICATIONS

- General purpose rubber belts for live roller and slider bed operations
- Light industrial and automation belts for oil-free service
- General conveying and power transmission applications

BENEFITS

- Can be used on slider bed and live roller applications where no oil is present

SLIPTOP™ - TAN NITRILE

Product Code	Item Description*	Rated Working Tension
24293302722	72"x3P PNT150 TAN NBR TDxFS (S25) SLIPTOP	150 lbs/in
24424321722	72"x4P SCP150 TAN NBR TDxFS (S10) SLIPTOP	150 lbs/in



Representative image

APPLICATIONS

- Horizontal conveyer systems where easy package release and diverting is required
- Light industrial and automation belts

BENEFITS

- Bare treated top has low coefficient of friction for easy package release
- Nitrile compound has excellent oil resistance

CARIPACK™ - BLACK RUBBER

Product Code	Item Description*	Rated Working Tension
24553125722	72"x3P PCB105 BLK SYN FSxFS (S10) CARIPACK	105 lbs/in



APPLICATIONS

- General purpose unit handling conveyor belt
- Used as general-purpose belts for slider bed and live roller conveyers where oil is not present
- Light industrial and automation belts for oil-free service

BENEFITS

- Good all-around properties for horizontal systems
- Polyester/cotton blend gives good fastener holding ability

HOT STOCK & WATER

HOT STOCK & WATER

Product Code	Item Description*	Rated Working Tension
24553011602	60"x3P PCB105 (300Z) BLK SYN SHDxFS (S8) HS&W	105 lbs/in
24553011722	72"x3P PCB105 (300Z) BLK SYN SHDxFS (S8) HS&W	105 lbs/in
24554011722	72"x4P PCB140 (300Z) BLK SYN SHDxFS (S8) HS&W	140 lbs/in



Representative image

APPLICATIONS

- Tire manufacturing
- Conveys rubber stock in various stages of processing
- Horizontal conveying systems where a bare fabric surface is preferred

BENEFITS

- Silver hard duck cotton top ply prevents hot rubber from sticking to belt surface
- Friction surface bottom gives low coefficient of friction on slider beds

Note: Cover is tan but skim rubber is black.

HOT STOCK & WATER BIG RED SILICONE

Product Code	Item Description*	Rated Working Tension
24553018602	60"x3P PCB105 BLK SYN SILxFS (S8) HS&W	105 lbs/in



APPLICATIONS

- Tire manufacturing
- Conveys rubber stock in various stages of processing

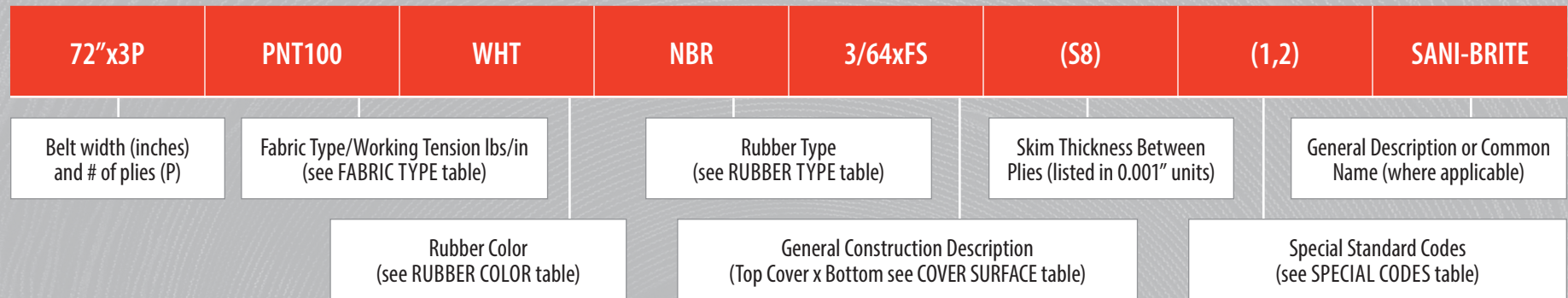
BENEFITS

- Red silicone top cover offers excellent resistance to heat
- Good release qualities
- Rated at higher temperature than standard HS & W belt (250° F)

Note: Cover is red but skim rubber is black.

PRODUCT ITEM DESCRIPTION KEY

72"x3P PNT100 WHT NBR 3/64xFS (S10) (1,2) SANI-BRITE



FABRIC TYPE

Code	Fabric
AP	Polyester
APT	Treated Polyester
MONO	Monofilament/Polyester
PCB	Polyester/Cotton
PN	Polyester/Nylon
PNT	Treated Polyester/Nylon
SCP	Special Cotton Blend

RUBBER COLOR

Code	Color
AMB	Amber/Beige
BLK	Black
BLU	Blue
ORG	Orange
R/B	Red/Brown
TAN	Tan
WHT	White

RUBBER TYPE

Code	Type
BTYL	Butyl
NAT	Natural
NBR	Nitrile
NEOP	Neoprene
PG	Pure Gum
SBR	Styrene-butadiene
SYN	Synthetic (Natural Rubber/SBR Blend)
XNBR	Carboxylate

COVER SURFACE

Code	Type
BB	Bare-Fabric
DIA	Diamond
FS	Friction Surface
LI	Light Impression
RD/TP	Ridge Top
RT	Grip Top
SHD	Silver Hard Duct
SIL	Silicone
TD	Treated Fabric
TEF	Teflon
V/CL	V-Cleat
#/Cover Thickness	Smooth

SPECIAL CODES

Code	Type
1	FDA
2	USDA
3	Fire Resistant
4	Non-Marking
5	Static Conductive

THERMOID, INC. | 800-543-8070 | © 2023 Thermoid

Thermoid is not responsible for possible errors in catalogs, brochures, websites and other materials, and may change such information without notice. HBD Thermoid reserves the right to modify its products without notice, including products already on order, as long as the modified product meets any agreed-upon specifications. All trademarks in this material are the property of HBD Industries Inc., or its subsidiaries. All other trademarks are the property of their respective owners.

UPDATED 05-2023